



PLAZA CENTER PALACE

2400-2422 S. 7 Hwy., Blue Springs, MO

RETAIL SPACES
AVAILABLE
FOR LEASE



\$12/SF NNN | 1,900 & 3,000 SF IN-LINE SPACES

DEMOGRAPHICS

| | 1 mile | 3 miles | 5 miles |
|-----------------------|-----------|-----------|-----------|
| Estimated Population | 13,131 | 47,399 | 93,177 |
| Avg. Household Income | \$113,152 | \$106,541 | \$123,076 |

- High traffic retail center
- Excellent visibility and access from State Route 7
- Abundant parking
- 3,000 SF in-line former tanning salon includes reception area, large conference room, and 12 private offices
- 1,900 SF in-line space offers open floor plan and private office
- Over 28,000 cars per day on 7 Highway



CLICK HERE TO VIEW MORE LISTING INFORMATION

For More Information Contact:

DANIEL BROCATO | 816.412.7303 | dbrocato@blockandco.com

KARSYN SMITH | 816.412.7372 | karsynsmith@blockandco.com

Exclusive Agents



3,000 SF SPACE PHOTOS





PLAZA CENTER PALACE

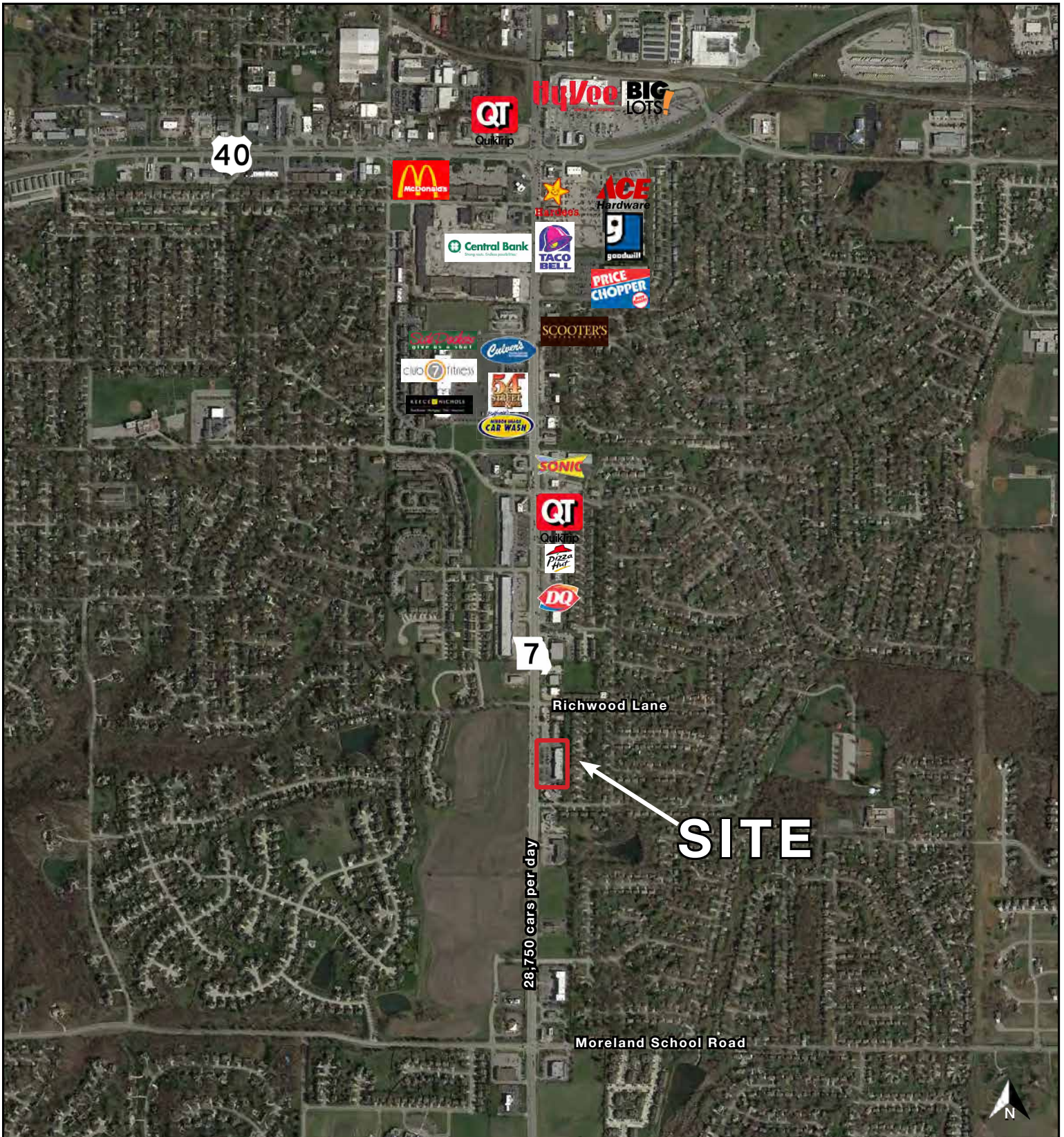
2400-2422 S. 7 Hwy., Blue Springs, MO

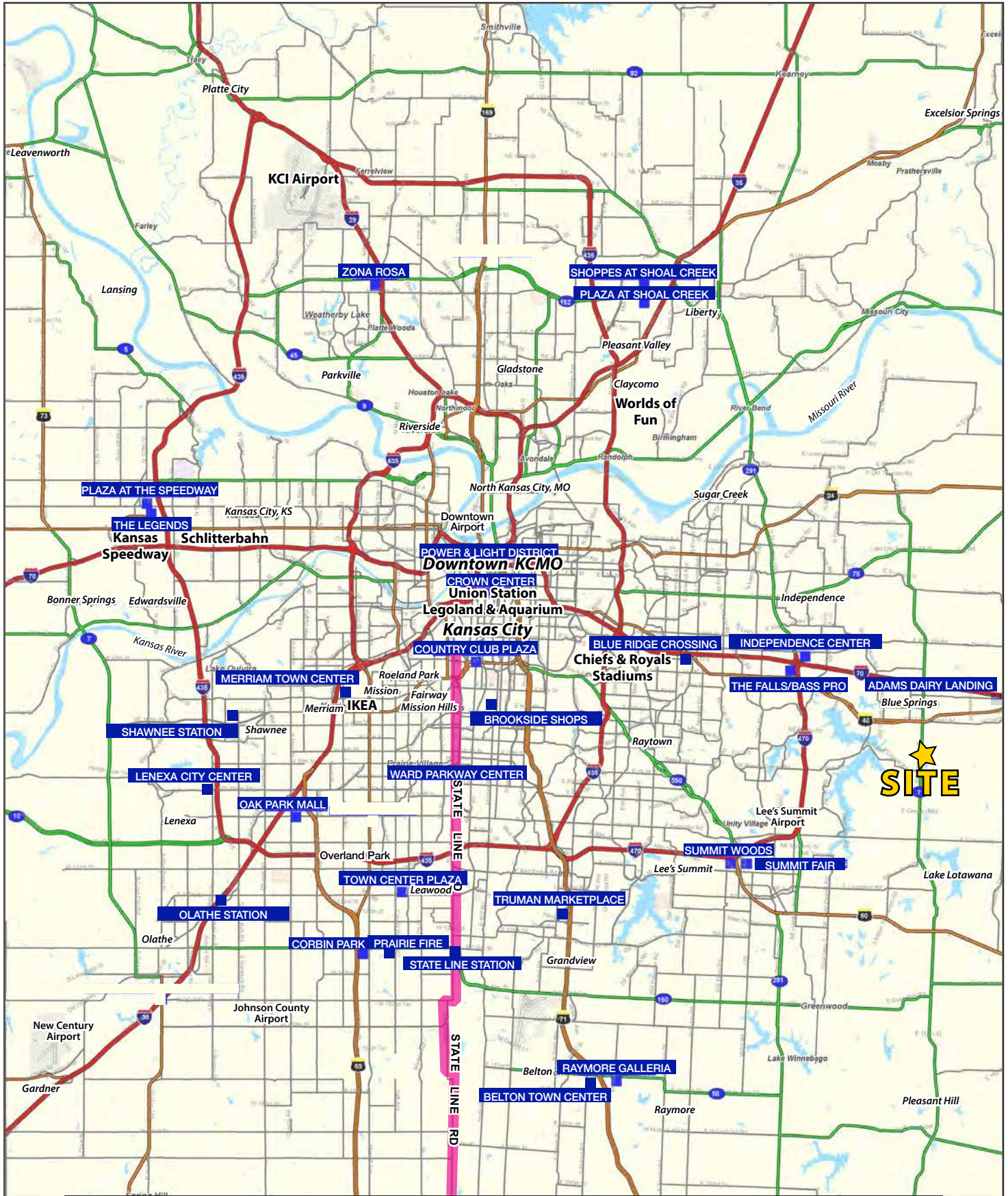
RETAIL SPACES
AVAILABLE
FOR LEASE

1,900 SF SPACE PHOTOS



AERIAL



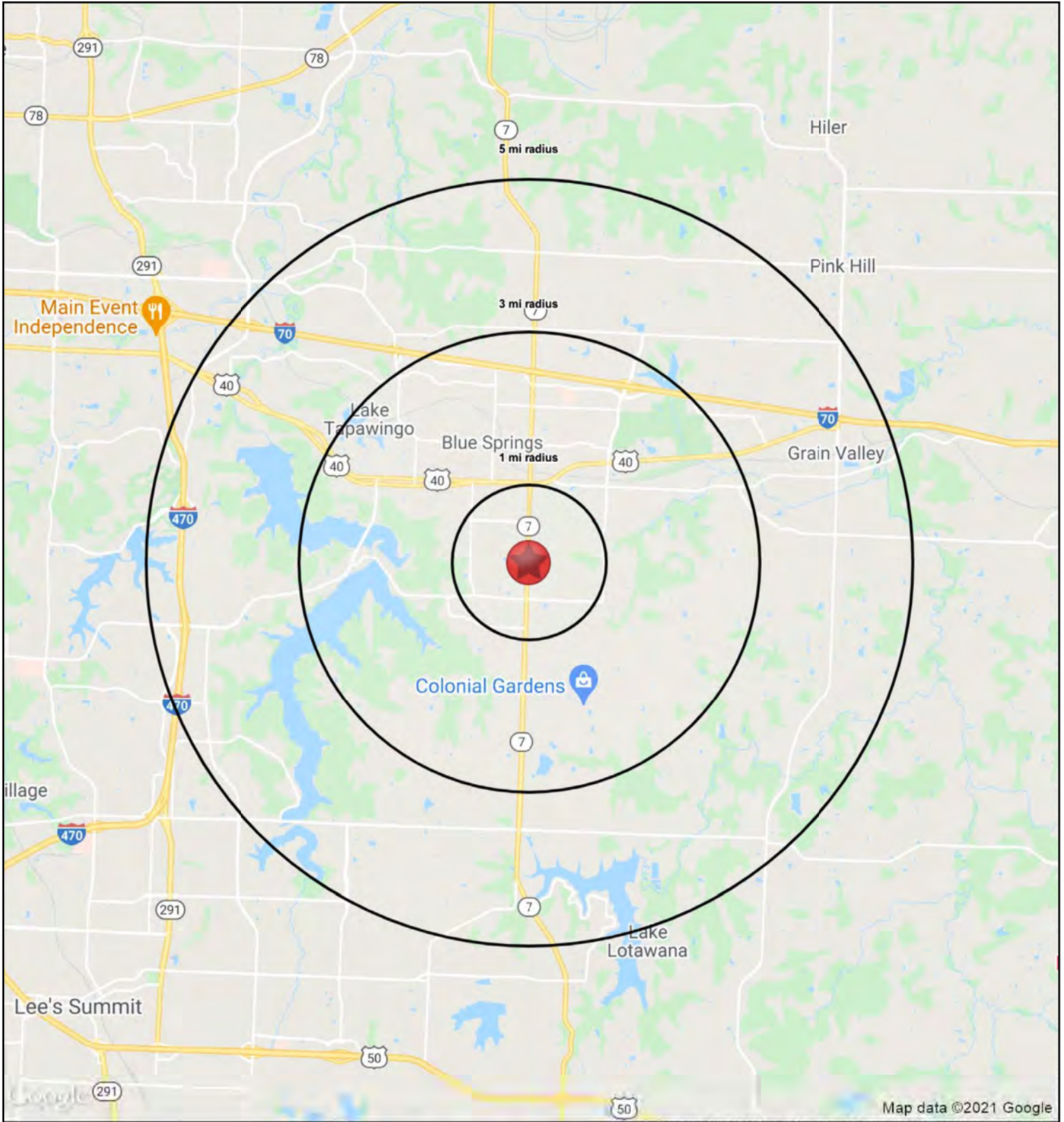




PLAZA CENTER PALACE

2400-2422 S. 7 Hwy., Blue Springs, MO

RETAIL SPACES
AVAILABLE
FOR LEASE





PLAZA CENTER PALACE

2400-2422 S. 7 Hwy., Blue Springs, MO

RETAIL SPACES
AVAILABLE
FOR LEASE

| 2400-2418 SW State Route 7 Blue Springs, MO 64014 | 1 mi radius | 3 mi radius | 5 mi radius |
|---|----------------|----------------|----------------|
| Population | | | |
| 2023 Estimated Population | 13,131 | 47,399 | 93,177 |
| 2028 Projected Population | 13,820 | 49,494 | 97,291 |
| 2020 Census Population | 13,381 | 46,943 | 92,831 |
| 2010 Census Population | 11,738 | 41,778 | 81,294 |
| Projected Annual Growth 2023 to 2028 | 1.0% | 0.9% | 0.9% |
| Historical Annual Growth 2010 to 2023 | 0.9% | 1.0% | 1.1% |
| 2023 Median Age | 34.2 | 35.4 | 36.6 |
| Households | | | |
| 2023 Estimated Households | 4,808 | 18,079 | 34,971 |
| 2028 Projected Households | 4,995 | 18,620 | 36,033 |
| 2020 Census Households | 4,835 | 17,691 | 34,400 |
| 2010 Census Households | 4,214 | 15,810 | 30,136 |
| Projected Annual Growth 2023 to 2028 | 0.8% | 0.6% | 0.6% |
| Historical Annual Growth 2010 to 2023 | 1.1% | 1.1% | 1.2% |
| Race and Ethnicity | | | |
| 2023 Estimated White | 78.9% | 78.9% | 80.8% |
| 2023 Estimated Black or African American | 10.6% | 11.0% | 9.5% |
| 2023 Estimated Asian or Pacific Islander | 1.4% | 1.5% | 1.7% |
| 2023 Estimated American Indian or Native Alaskan | 0.4% | 0.4% | 0.3% |
| 2023 Estimated Other Races | 8.7% | 8.2% | 7.7% |
| 2023 Estimated Hispanic | 6.7% | 6.6% | 6.3% |
| Income | | | |
| 2023 Estimated Average Household Income | \$113,152 | \$106,541 | \$123,076 |
| 2023 Estimated Median Household Income | \$83,171 | \$81,527 | \$91,661 |
| 2023 Estimated Per Capita Income | \$41,439 | \$40,665 | \$46,223 |
| Education (Age 25+) | | | |
| 2023 Estimated Elementary (Grade Level 0 to 8) | 1.0% | 1.1% | 1.1% |
| 2023 Estimated Some High School (Grade Level 9 to 11) | 3.5% | 4.0% | 3.1% |
| 2023 Estimated High School Graduate | 30.7% | 30.4% | 27.8% |
| 2023 Estimated Some College | 27.3% | 25.0% | 23.6% |
| 2023 Estimated Associates Degree Only | 7.5% | 8.3% | 8.6% |
| 2023 Estimated Bachelors Degree Only | 19.3% | 20.6% | 23.4% |
| 2023 Estimated Graduate Degree | 10.6% | 10.6% | 12.4% |
| Business | | | |
| 2023 Estimated Total Businesses | 304 | 1,710 | 2,980 |
| 2023 Estimated Total Employees | 2,288 | 12,702 | 22,999 |
| 2023 Estimated Employee Population per Business | 7.5 | 7.4 | 7.7 |
| 2023 Estimated Residential Population per Business | 43.2 | 27.7 | 31.3 |

©2023, Sites USA, Chandler, Arizona, 480-491-1112 Demographic Source: Applied Geographic Solutions 4/2023, TIGER Geography - RS1

